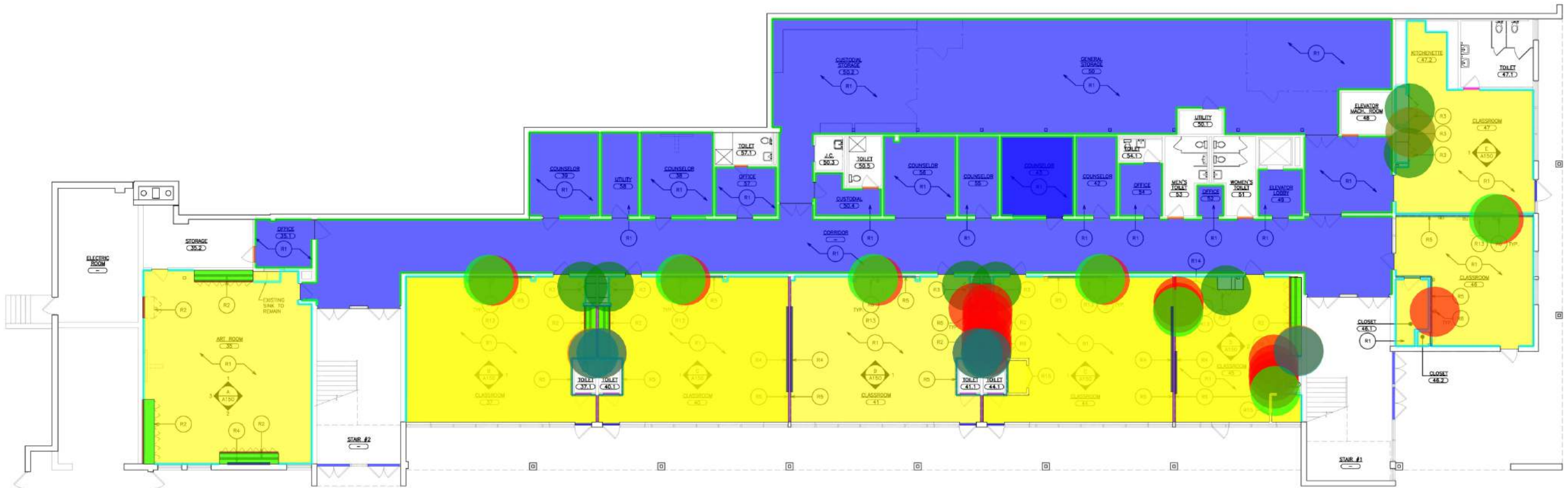


AS PER USA CONGRESS ARCHITECTURAL WORKS COPYRIGHT PROTECTION ACT OF 1980 ALL IDEAS AND DESIGNS INCLUDING DERIVATIVES THEREOF, ALL DRAWINGS AND SPECIFICATIONS CONSTITUTE THE ORIGINAL COPYRIGHT WORK BY FULLER AND D'ANGELO, P.C. (F&D). THE DRAWINGS AND SPECIFICATIONS AS INSTRUMENTS OF SERVICE BY F&D ARE CREATED BY F&D FOR THIS PROJECT ONLY AND REMAIN THE PRODUCT AND PROPERTY OF F&D. ANY REPRODUCTION WITHOUT THE PRIOR CONSENT OF F&D IS PROHIBITED.



- R1- Remove VCT Flooring W/ Mastic and Substrate
- R1- Remove, Salvage and Reinstall Aluminum Saddle
- R1- Remove Transition Strip
- R1- Remove Base
- R2- Remove Casework
- R2- Remove Countertop
- R2- Remove Sink
- R3- Remove Double Leaf Wardrobe Door and Salvage Hardware
- R3- Remove Single Leaf Wardrobe Door and Salvage Hardware
- R5- (2) Remove Gypsum Board, Sound Attenuation and Ceiling Wall Angle @ 12' H
- R5- (1) Remove Gypsum Board, Sound Attenuation and Ceiling Wall Angle @ 12' H
- R6- Remove and Relocate Electrical Outlet
- R6- Remove and Relocate Data Jacks
- R15- Remove Interior Wall @ 10' H
- Shutoff Valve
- R14- Remove Side Panel @ 10' H
- R4- Remove, Salvage and Reinstall Wall Mounted Tack Board @ 10' H
- R1- Remove VCT Flooring W/ Mastic and Substrate
- R1- Remove Transition Strip
- R1- Remove Base

10083.2 SQ FT	Yellow
40.6 FT	Blue
17.9 FT	Pink
464.7 FT	Cyan
169.1 FT	Brown
178.0 SQ FT	Green
5.0 EA	Orange
7.0 EA	Light Green
1.0 EA	Dark Green
84.3 FT	Purple
175.0 FT	Light Blue
19.0 EA	Red
7.0 EA	Light Blue
20.6 FT	Yellow
5.0 EA	Light Blue
2.5 FT	Red
64.1 FT	Blue
6759.8 SQ FT	Blue
17.5 FT	Blue
1181.4 FT	Green

**REMOVAL NOTES:**

COORDINATE ALL REMOVALS WITH ASBESTOS AND LEAD ABATEMENT DRAWINGS AND SPECIFICATIONS.

- R1 REMOVE EXISTING VCT FLOOR TILE (MULTIPLE LAYERS MAY EXIST), WALL BASE, TRANSITION STRIPS, MASTIC AND SUBSTRATE DOWN TO EXISTING SLAB. AT DOORS TO THE EXTERIOR, SALVAGE & CLEAN ALUMINUM SADDLES AND STORE FOR REINSTALLATION. MECHANICALLY PROFILE TOOE OF EXISTING FLOOR SLAB IN PREPARATION FOR NEW FLOOR FINISHES.
- R2 REMOVE EXISTING CASWORK, COUNTERTOPS, BASE AND ALL RELATED ITEMS. REMOVE EXISTING PLUMBING FIXTURES AND PROVIDE NEW SHUT OFF VALVES. PATCH ALL DISTURBED SURFACES TO MATCH EXISTING ADJACENT SURFACES.
- R3 REMOVE EXISTING WARDROBE DOORS, SALVAGE HARDWARE AND ALL RELATED ITEMS FOR REINSTALLATION. REFER TO DOOR SCHEDULE. PATCH ALL DISTURBED SURFACES TO MATCH EXISTING ADJACENT SURFACES. MAINTAIN INTERIOR OF WARDROBE FOR RE-FINISHING.
- R4 REMOVE EXISTING WALL MOUNTED TACK BOARD AND STORE. PATCH ALL DISTURBED SURFACES THAT ARE TO REMAIN. REINSTALL UPON COMPLETION OF WORK.
- R5 REMOVE EXISTING TACKABLE WALL SURFACE, GYPSUM BOARD, SOUND ATTENUATION AND PORTION OF EXISTING CEILING WALL ANGLE DOWN TO EXISTING METAL STUDS. PROVIDE TEMPORARY SUPPORT FOR CEILING GRID WHERE CEILING WALL ANGLE IS REMOVED.
- R6 REMOVE AND RELOCATE EXISTING WALL MOUNTED ELECTRICAL OUTLETS AND DATA JACKS, AS REQUIRED TO ACCOMPLISH WORK, WHETHER SHOWN OR NOT.
- R7 ALTERNATE #01 - REMOVE EXISTING SUSPENDED ACOUSTICAL CEILING TILE PANELS (2x4 OR 2x2). EXISTING SUSPENSION GRID IS TO REMAIN. TEMPORARY SUPPORT ALL LIGHT FIXTURES, CEILING MOUNTED DEVICES & DIFFUSERS.
- R8 ALTERNATE #02 - REMOVE EXISTING SUSPENDED CEILING ASSEMBLY IN ITS ENTIRETY (2x4 OR 2x2), INCLUDING BUT NOT LIMITED TO SUSPENSION SYSTEM, ACOUSTIC CEILING PANELS, WALL ANGLES, SERVIC TIES AND ALL RELATED ITEMS. PATCH ALL DISTURBED SURFACES TO MATCH EXISTING ADJACENT SURFACES.
- R9 ALTERNATE #02 - REMOVE EXISTING LIGHT FIXTURE. SEE ELECTRICAL DRAWINGS.
- R10 ALTERNATE #02 - REMOVE AND RELOCATE EXISTING CEILING MOUNTED DEVICES TO LOCATIONS SHOWN ON NEW REFLECTED CEILING PLAN.
- R11 ALTERNATE #02 - REMOVE AND RELOCATE EXISTING MECHANICAL REGISTER/DIFFUSER. EXTEND AND MODIFY DUCTWORK TO LOCATIONS SHOWN ON NEW REFLECTED CEILING PLAN. REFER TO DTL R/AS06.
- R12 ALTERNATE #02 - RELOCATE EXISTING SPRINKLER HEADS TO LOCATIONS SHOWN ON NEW REFLECTED CEILING PLAN. REFER TO DTL S/AS06.
- R13 SCHOOL DISTRICT IS TO REMOVE AND STORE EXISTING SMART BOARD TO ALLOW FOR REMOVAL OF TACKABLE WALL SURFACE. SCHOOL DISTRICT WILL REINSTALL SMART BOARD UPON COMPLETION OF NEW GYPSUM BOARD INSTALLATION.
- R14 REMOVE WOOD TRIM & SIDE PANEL LEFT OVER FROM PRIOR CABINET REMOVAL. PATCH ALL DISTURBED SURFACES.
- R15 REMOVE GYPSUM BOARD & WOOD STUD PARTITION IN ITS ENTIRETY, AS INDICATED. PATCH ALL DISTURBED SURFACES.

**GENERAL NOTE:**  
REFER TO DRAWING A10 AND SPECIFICATIONS FOR PHASING AND ALTERNATES



**FULLER  
D-ANGELO  
P.C.**  
ARCHITECTS  
PLANNERS

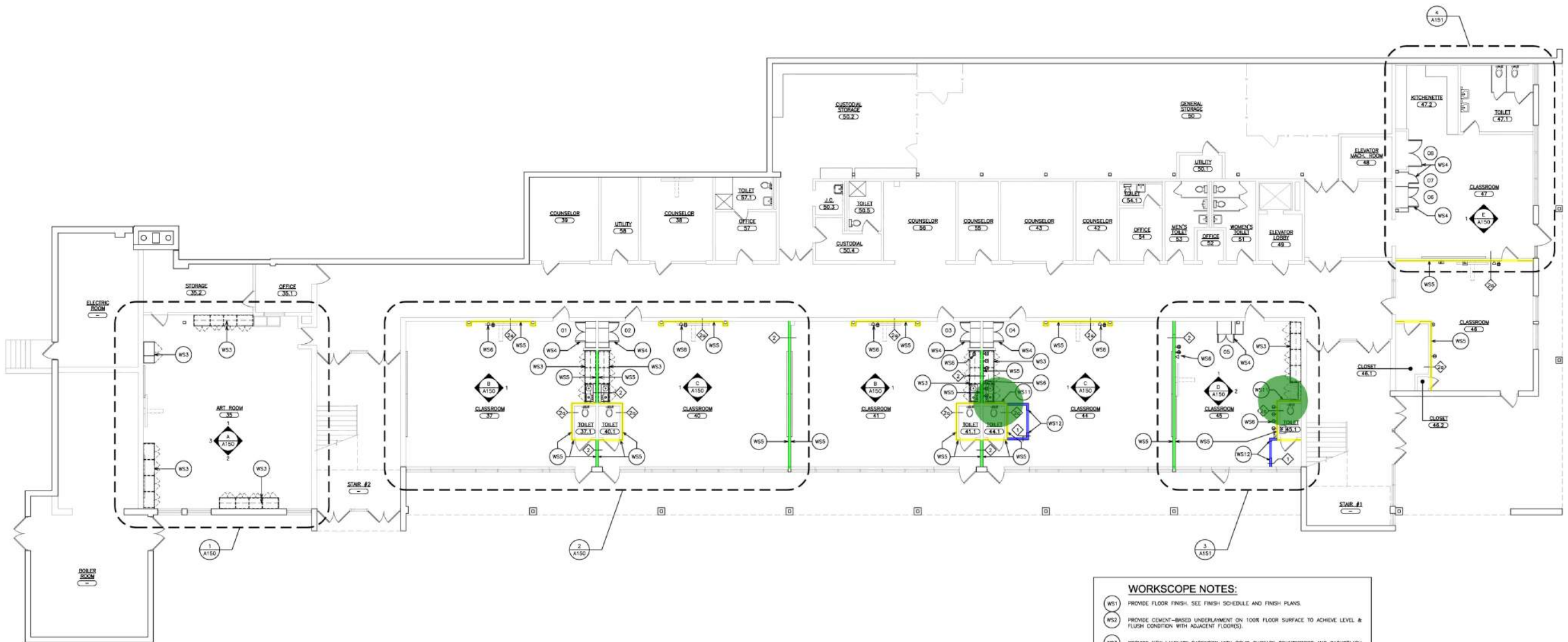
48 ENCLAWWOOD ROAD ELMSFORD NEW YORK 10523  
TEL: 914.899.4444  
WWW.FULLERDANGELO.COM

PROJECT TITLE STANFORD STILLMEADOW ELEMENTARY SCHOOL MILLWORK, FLOORING & CEILING REPLACEMENT 800 S HILLVIEW ROAD, STAMFORD, CT 06902	ISSUED FOR LOWER LEVEL FLOOR PLAN - REMOVALS
12-09-2021	B.I.D.
05-03-2021	D.D. SUBMISSION
DATE	ISSUED TO
SHEET SIZE 30"x42"	DRAWING NO. AR100
SCALE AS NOTED	FILE NO. 21418.00
DRAWN BY F & D	

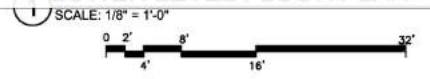
AS PER USA CONGRESS ARCHITECTURAL WORKS COPYRIGHT PROTECTION ACT OF 1980 ALL IDEAS AND DESIGNS INCLUDING DERIVATIVES THEREOF, ALL DRAWINGS AND SPECIFICATIONS CONSTITUTE THE ORIGINAL COPYRIGHT WORK BY FULLER AND D'ANGELO, P.C. (F&D). THE DRAWINGS AND SPECIFICATIONS AS INSTRUMENTS OF SERVICE BY F&D ARE CREATED BY F&D FOR THIS PROJECT ONLY AND REMAIN THE PROPERTY AND PROPERTY OF F&D. ANY REPRODUCTION WITHOUT THE PRIOR CONSENT OF F&D IS PROHIBITED.

48 ENHILMENDED ROAD BLANCKFORD NEW YORK 10884  
 TEL: 917-699-4444  
 WWW.FULLERDANGELO.COM  
 FULLER AND D'ANGELO ARCHITECTS P.C.  
 ARCHITECTS  
 PLANNERS

FULLER  
 D'ANGELO  
 P.C.  
 ARCHITECTS  
 PLANNERS



- Wall Type - 2 @ 12' H 85.4 FT
- Wall Type - 2a @ 12' H 189.7 FT
- Wall Type - 1 @ 10' H 20.6 FT
- WS11- 3/4" Particle Board Enclosure 2.0 EA



- WORKSCOPE NOTES:**
- WS1 PROVIDE FLOOR FINISH. SEE FINISH SCHEDULE AND FINISH PLANS.
  - WS2 PROVIDE CEMENT-BASED UNDERLAYMENT ON 100% FLOOR SURFACE TO ACHIEVE LEVEL & FLUSH CONDITION WITH ADJACENT FLOORS.
  - WS3 PROVIDE NEW LAMINATE CASEWORK WITH SOLID SURFACE COUNTERTOPS AND BACKSPASH. SEE DETAILS A525.
  - WS4 PROVIDE NEW DOOR WITH PLASTIC LAMINATE FINISH, CLEAN, OIL, ADJUST AND RE-INSTALL BALANCED HARDWARE. SEE DOOR SCHEDULE AND SPECIFICATIONS. LIGHTLY SAND AND PAINT INTERIOR OF WARDROBE, BEING CAREFUL NOT TO PAINT OVER INTERIOR HARDWARE (COAT RODS/HOOKS, SHELF STANDARDS, SLIDE BOLTS, ETC.). TYPICAL.
  - WS5 PROVIDE 5/8" TYPE 'X' GYPSUM BOARD OVER EXISTING METAL STUDS.
  - WS6 INSTALL RELOCATED EXISTING WALL MOUNTED ELECTRICAL OUTLETS AND DATA JACKS. CONCEAL CONDUIT WITH-IN WALL, RECESS BACKBOXES AND SET DEVICES FLUSH.
  - WS7 BASE RD - PROVIDE NEW EXTENDED LEG CEILING WALL ANGLE MOLDING AT ALL NEW GYPSUM BOARD.
  - WS8 ALTERNATE #01 & #04 - LEAVING EXISTING GRID. PROVIDE NEW ACoustICAL CEILING TILES AND RE-INSTALL CEILING MOUNTED DEVICES. EXISTING GRID IS TO REMAIN.
  - WS9 ALTERNATE #02 & #05 - PROVIDE NEW SUSPENDED ACoustICAL CEILING SYSTEM w/ ALL RELATED ITEMS AND GYPSUM BOARD SOFFITS WHERE INDICATED. ELECTRICAL CONTRACTOR TO PROVIDE NEW LIGHT FIXTURES & RELOCATE CEILING MOUNTED DEVICES, CENTERED IN TILE. COORDINATE INSTALLATION WITH MECHANICAL, ELECTRICAL AND PLUMBING. ALL DEVICES ARE TO BE ADJUSTED AND RE-INSTALLED CENTERED-IN-TILE. SEE SPECIFICATIONS FOR ADDITIONAL INFORMATION. SEE DETAILS A500.
  - WS10 ALTERNATE #02 & #05 - PROVIDE NEW LED LIGHT FIXTURES.
  - WS11 PROVIDE ENCLOSURE TO MATCH CASEWORK MOUNTED TO WALL TO CONCEAL EXPOSED DRAINAGE. ENCLOSURE IS TO EXTEND BEYOND COUNTER AND BE COPED TO NEW CABINET. 3/4" PARTICLE BOARD w/ 3mm PVC EDGE AT EXPOSED CUT ENDS.
  - WS12 PROVIDE NEW PARTITION GYPSUM BOARD WITH 3'x7' FINISHED OPENING. 3/8" METAL STUDS WITH 1/2" GYPSUM BOARD ON BOTH SIDES. REFER TO DET. 7/A500. FINISH PER FINISH SCHEDULE.  
 RM 44 - TOP OF WALL TO UNDERSIDE OF CEILING  
 RM 45 - WALL TO ALIGN WITH WINDOW MULLION, TOP TO ALIGN WITH WINDOW SILL AND FAR SIDE TO BUTT INTO AND ALIGN WITH TOILET PARTITION.
  - WS13 ALTERNATE #01 & #04 - SCRAPE, CLEAN, PRIME AND PAINT EXISTING CEILING GRID.

**GENERAL NOTE:**  
 REFER TO DRAWING A10 AND SPECIFICATIONS FOR PHASING AND ALTERNATES



PROJECT TITLE: STANFORD ELEMENTARY SCHOOL MILLWORK, FLOORING & CEILING REPLACEMENT 800 S FULLERTON ROAD, STAMFORD, CT 06902	
DATE: 12-09-2021	BY: B.I.D.
DATE: 05-03-2021	BY: D.D. SUBMISSION
DATE:	BY: ISSUED FOR
SHEET SIZE: 30"x42"	DRAWING NO:
SCALE: AS NOTED	<b>A100</b>
DRAWN BY: F & D	FILE NO: 21418.00

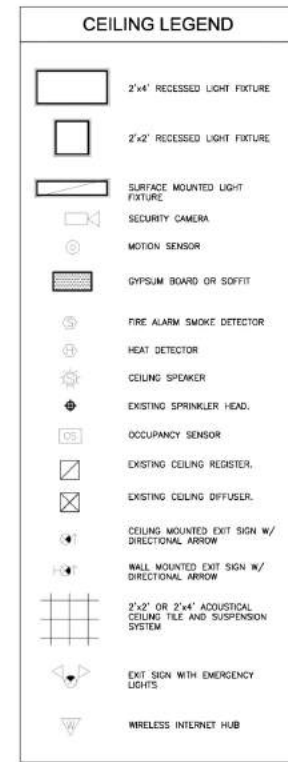




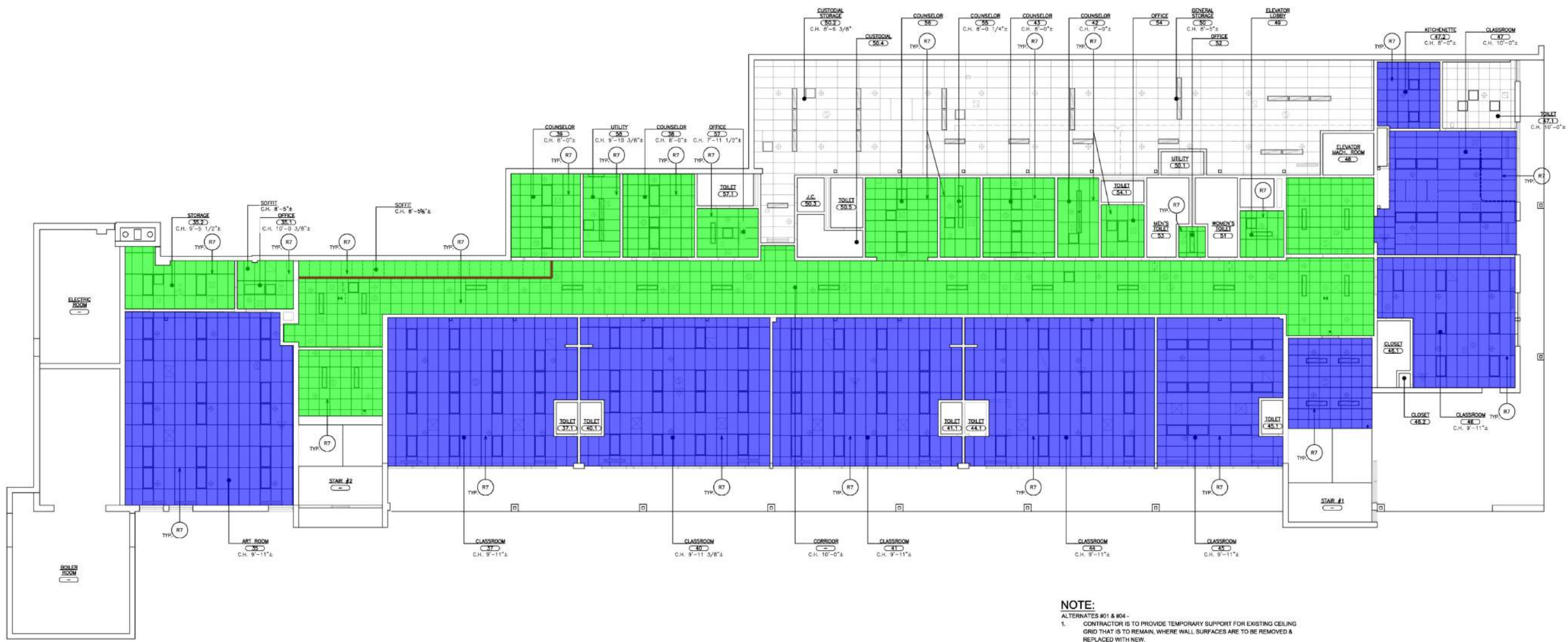




-  R7 - Remove Acoustical Ceiling Tiles Panels Only 7073.2 SQ FT
-  R7 - Remove Gypsum Board Soffit W/ Framing @ 4'-0" H 50.5 FT
-  R7 - Remove Acoustical Ceiling Tiles Panels Only 4367.4 SQ FT



- ### REMOVAL NOTES:
- COORDINATE ALL REMOVALS WITH ARBESTOS AND LEAD ABATEMENT DRAWINGS AND SPECIFICATIONS.
- R1 REMOVE EXISTING VCT FLOOR TILE (MULTIPLE LAYERS MAY EXIST), WALL BASE, TRANSITION STRIPS, MASTIC AND SUBSTRATE DOWN TO EXISTING SLAB AT DOORS TO THE EXTERIOR. SALVAGE & CLEAN ALUMINUM SADDLES AND STORE FOR REINSTALLATION. MECHANICALLY PROFILE TOOLS OF EXISTING FLOOR SLAB IN PREPARATION FOR NEW FLOOR FINISHES.
  - R2 REMOVE EXISTING CASEWORK, COUNTERTOPS, BASE AND ALL RELATED ITEMS. REMOVE EXISTING PLUMBING FIXTURES AND PROVIDE NEW SHUT OFF VALVES. PATCH ALL DISTURBED SURFACES TO MATCH EXISTING ADJACENT SURFACES.
  - R3 REMOVE EXISTING WARDROBE DOORS, SALVAGE HARDWARE AND ALL RELATED ITEMS FOR REINSTALLATION. REFER TO DOOR SCHEDULE. PATCH ALL DISTURBED SURFACES TO MATCH EXISTING ADJACENT SURFACES. MAINTAIN INTERIOR OF WARDROBE FOR RE-FINISHING.
  - R4 REMOVE EXISTING WALL MOUNTED TACK BOARD AND STORE. PATCH ALL DISTURBED SURFACES THAT ARE TO REMAIN. REINSTALL UPON COMPLETION OF WORK.
  - R5 REMOVE EXISTING TACKABLE WALL SURFACE, GYPSUM BOARD, SOUND ATTENUATION AND PORTION OF EXISTING CEILING WALL ANGLE DOWN TO EXISTING METAL STUDS. PROVIDE TEMPORARY SUPPORT FOR CEILING GRID WHERE CEILING WALL ANGLE IS REMOVED.
  - R6 REMOVE AND RELOCATE EXISTING WALL MOUNTED ELECTRICAL OUTLETS AND DATA JACKS, AS REQUIRED TO ACCOMPLISH WORK, WHETHER SHOWN OR NOT.
  - R7 ALTERNATE #01 - REMOVE EXISTING SUSPENDED ACOUSTICAL CEILING TILE PANELS (2'x4' OR 2'x2'). EXISTING SUSPENSION GRID IS TO REMAIN. TEMPORARY SUPPORT ALL LIGHT FIXTURES, CEILING MOUNTED DEVICES & DIFFUSERS.
  - R8 ALTERNATE #02 - REMOVE EXISTING SUSPENDED CEILING ASSEMBLY IN ITS ENTIRETY (2'x4' OR 2'x2'), INCLUDING BUT NOT LIMITED TO SUSPENSION SYSTEM, ACOUSTIC CEILING PANELS, WALL ANGLES, SEISMIC TIES AND ALL RELATED ITEMS. PATCH ALL DISTURBED SURFACES TO MATCH EXISTING ADJACENT SURFACES.
  - R9 ALTERNATE #02 - REMOVE EXISTING LIGHT FIXTURE. SEE ELECTRICAL DRAWINGS.
  - R10 ALTERNATE #02 - REMOVE AND RELOCATE EXISTING CEILING MOUNTED DEVICES TO LOCATIONS SHOWN ON NEW REFLECTED CEILING PLAN.
  - R11 ALTERNATE #02 - REMOVE AND RELOCATE EXISTING MECHANICAL REGISTER/OFFUSER. EXTEND AND MODIFY DUCTWORK TO LOCATIONS SHOWN ON NEW REFLECTED CEILING PLAN. REFER TO DTL 8/A500.
  - R12 ALTERNATE #02 - RELOCATE EXISTING SPRINKLER HEADS TO LOCATIONS SHOWN ON NEW REFLECTED CEILING PLAN. REFER TO DTL 5/A500.
  - R13 SCHOOL DISTRICT IS TO REMOVE AND STORE EXISTING SMART BOARD TO ALLOW FOR REMOVAL OF TACKABLE WALL SURFACE. SCHOOL DISTRICT WILL REINSTALL SMART BOARD UPON COMPLETION OF NEW GYPSUM BOARD INSTALLATION.
  - R14 REMOVE WOOD TRIM & SIDE PANEL LEFT OVER FROM PRIOR CABINET REMOVAL. PATCH ALL DISTURBED SURFACES.
  - R15 REMOVE GYPSUM BOARD & WOOD STUD PARTITION IN ITS ENTIRETY, AS INDICATED. PATCH ALL DISTURBED SURFACES.



- NOTE:**  
ALTERNATES #01 & #04 -
- CONTRACTOR IS TO PROVIDE TEMPORARY SUPPORT FOR EXISTING CEILING GRID THAT IS TO REMAIN, WHERE WALL SURFACES ARE TO BE REMOVED & REPLACED WITH NEW.
  - SCRAPE, CLEAN, PRIME AND PAINT EXISTING CEILING GRID THAT IS TO REMAIN.

**LOWER LEVEL REFLECTED CEILING PLAN - REMOVALS - ALTERNATES #01 & #04**  
SCALE: 1/8" = 1'-0"



AS PER USA CONGRESS ARCHITECTURAL WORKS COPYRIGHT PROTECTION ACT OF 1980 ALL IDEAS AND DESIGNS INCLUDING DERIVATIVES THEREOF, ALL DRAWINGS AND SPECIFICATIONS CONSTITUTE THE ORIGINAL COPYRIGHT WORK BY FULLER & D'ANGELO, P.C. (F&D). THE DRAWINGS AND SPECIFICATIONS AS INSTRUMENTS OF SERVICE BY F&D ARE CREATED BY F&D FOR THIS PROJECT ONLY AND REMAIN THE PROPERTY AND PROPERTY OF F&D. ANY REPRODUCTION WITHOUT THE PRIOR CONSENT OF F&D IS PROHIBITED.

**FULLER & D'ANGELO P.C.**  
ARCHITECTS & PLANNERS

PROJECT: STAMFORD ELEMENTARY SCHOOL, STILLMEADOW FLOORING & CEILING REPLACEMENT, 600 S HULLAVAN ROAD, STAMFORD, CT 06902

DATE: 12-09-2021  
D.D. SUBMISSION

SHEET SIZE: 30"x42"  
SCALE: AS NOTED

DRAWN BY: F & D  
FILE NO: 21418.00



WS8- (2 x 4) Acoustical Ceiling Tile Panels Only	6624.9 SQ FT
WS8- (2 X 2) Acoustical Ceiling Tile Panels Only	175.1 SQ FT
WS7- Extended Leg Ceiling Wall Angle Molding	321.9 FT
Gypsum Board Soffit @ 4' H	9.5 FT
(1'-6" H) Flush Soffit	10.0 FT
WS8- (2 x 4) Acoustical Ceiling Tile Panels Only	1058.8 SQ FT
WS8- (2 X 2) Acoustical Ceiling Tile Panels Only	3579.8 SQ FT
Gypsum Board Soffit @ 4' H	50.5 FT
(1'-6" H) Flush Soffit	12.6 FT

### CEILING LEGEND

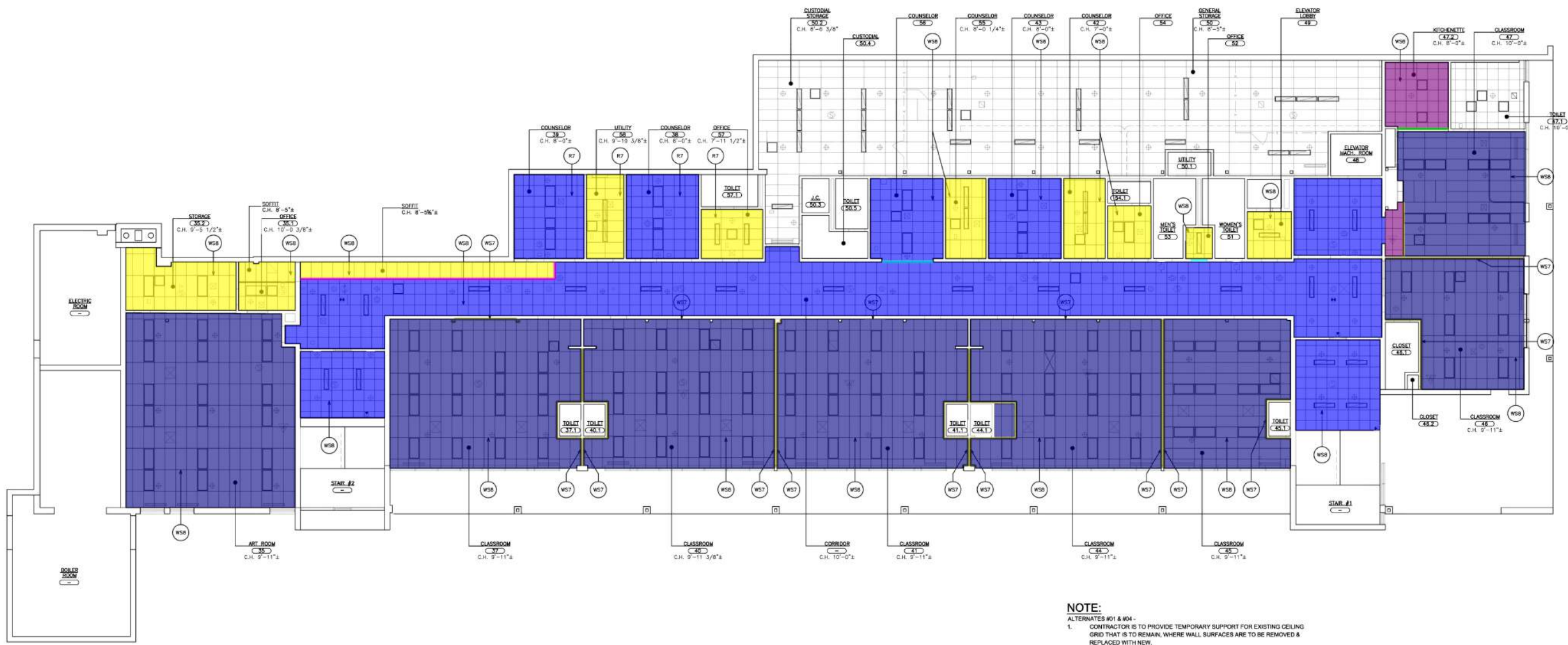
	2'x4' RECESSED LIGHT FIXTURE
	2'x2' RECESSED LIGHT FIXTURE
	SURFACE MOUNTED LIGHT FIXTURE
	SECURITY CAMERA
	MOTION SENSOR
	GYPSUM BOARD OR SOFFIT
	FIRE ALARM SMOKE DETECTOR
	HEAT DETECTOR
	CEILING SPEAKER
	EXISTING SPRINKLER HEAD
	OCCUPANCY SENSOR
	EXISTING CEILING REGISTER
	EXISTING CEILING DIFFUSER
	CEILING MOUNTED EXIT SIGN W/ DIRECTIONAL ARROW
	WALL MOUNTED EXIT SIGN W/ DIRECTIONAL ARROW
	2'x2' OR 2'x4' ACOUSTICAL CEILING TILE AND SUSPENSION SYSTEM
	EXIT SIGN WITH EMERGENCY LIGHTS
	WIRELESS INTERNET HUB

- ### WORKSCOPE NOTES:
- WS1 PROVIDE FLOOR FINISH. SEE FINISH SCHEDULE AND FINISH PLANS.
  - WS2 PROVIDE CEMENT-BASED UNDERLAYMENT ON 100% FLOOR SURFACE TO ACHIEVE LEVEL & FLUSH CONDITION WITH ADJACENT FLOOR(S).
  - WS3 PROVIDE NEW LAMINATE CASEWORK WITH SOLID SURFACE COUNTERTOPS AND BACKSPLASH. SEE DETAILS A502.
  - WS4 PROVIDE NEW BOOR WITH PLASTIC LAMINATE FINISH. CLEAN, OIL, ADJUST AND RE-INSTALL SALVAGED HARDWARE. SEE DOOR SCHEDULE AND SPECIFICATIONS. LIGHTLY SAND AND PAINT INTERIOR OF WARDROBE. BEING CAREFUL NOT TO PAINT OVER INTERIOR HARDWARE (COAT RODS/HOOKS, SHELF STANDARDS, SLIDE BOLTS, ETC.). TYPICAL.
  - WS5 PROVIDE 5/8" TYPE 'X' GYPSUM BOARD OVER EXISTING METAL STUDS.
  - WS6 INSTALL RELOCATED EXISTING WALL MOUNTED ELECTRICAL OUTLETS AND DATA JACKS. CONCEAL CONDUIT WITH-IN WALL. RECESS BACKBOXES AND SET DEVICES FLUSH.
  - WS7 BASE MD - PROVIDE NEW EXTENDED LEG CEILING WALL ANGLE MOLDING AT ALL NEW GYPSUM BOARD.
  - WS8 ALTERNATE #01 & #04 - LEAVING EXISTING GRID, PROVIDE NEW ACOUSTICAL CEILING TILES AND RE-INSTALL CEILING MOUNTED DEVICES. EXISTING GRID IS TO REMAIN.
  - WS9 ALTERNATE #02 & #05 - PROVIDE NEW SUSPENDED ACOUSTICAL CEILING SYSTEM W/ ALL RELATED ITEMS AND GYPSUM BOARD SOFFITS WHERE INDICATED. ELECTRICAL CONTRACTOR TO PROVIDE NEW LIGHT FIXTURES & RELOCATE CEILING MOUNTED DEVICES. CENTERED IN TILE. COORDINATE INSTALLATION WITH MECHANICAL, ELECTRICAL AND PLUMBING. ALL DEVICES ARE TO BE ADJUSTED AND RE-INSTALLED CENTERED-IN-TILE. SEE SPECIFICATIONS FOR ADDITIONAL INFORMATION. SEE DETAILS A500.
  - WS10 ALTERNATE #02 & #05 - PROVIDE NEW LED LIGHT FIXTURES.
  - WS11 PROVIDE ENCLOSURE TO MATCH CASEWORK MOUNTED TO WALL TO CONCEAL EXPOSED DRINKER. ENCLOSURE IS TO EXTEND BENEATH COUNTER AND BE COPIED TO NEW CABINET. 2" PARTICLE BOARD w/ 3mm PVC EDGE AT EXPOSED CUT ENDS.
  - WS12 PROVIDE NEW PARTITION GYPSUM BOARD WITH 3/4" FINISHED OPENING. 3" METAL STUDS WITH 1/2" GYPSUM BOARD ON BOTH SIDES. REFER TO DTL 7/A500. FINISH PER FINISH SCHEDULE. RM 44 - TOP OF WALL TO UNDERSIDE OF CEILING. RM 45 - WALL TO ALIGN WITH WINDOW MULLION TOP TO ALIGN WITH WINDOW SILL AND FAR SIDE TO BUTT INTO AND ALIGN WITH TOILET PARTITION.
  - WS13 ALTERNATE #01 & #04 - SCRAPE, CLEAN, PRIME AND PAINT EXISTING CEILING GRID.



**GENERAL NOTE:**  
REFER TO DRAWING A10 AND SPECIFICATIONS FOR PHASING AND ALTERNATES

AS PER USA CONGRESS ARCHITECTURAL WORKS COPYRIGHT PROTECTION ACT OF 1990 ALL IDEAS AND DESIGNS INCLUDING DERIVATIVES THEREOF, ALL DRAWINGS AND SPECIFICATIONS CONSTITUTE THE ORIGINAL COPYRIGHT WORK BY FULLER & D'ANGELO, P.C. (F&D). THE DRAWINGS AND SPECIFICATIONS AS INSTRUMENTS OF SERVICE BY F&D ARE CREATED BY F&D FOR THIS PROJECT ONLY AND REMAIN THE PRODUCT AND PROPERTY OF F&D. ANY REPRODUCTION WITHOUT THE PRIOR CONSENT OF F&D IS PROHIBITED.



**NOTE:**  
ALTERNATES #01 & #04 -  
1. CONTRACTOR IS TO PROVIDE TEMPORARY SUPPORT FOR EXISTING CEILING GRID THAT IS TO REMAIN. WHERE WALL SURFACES ARE TO BE REMOVED & REPLACED WITH NEW.  
2. SCRAPE, CLEAN, PRIME AND PAINT EXISTING CEILING GRID THAT IS TO REMAIN.

**1 LOWER LEVEL REFLECTED CEILING PLAN - REMOVALS - ALTERNATES #01 & #04**  
SCALE: 1/8" = 1'-0"



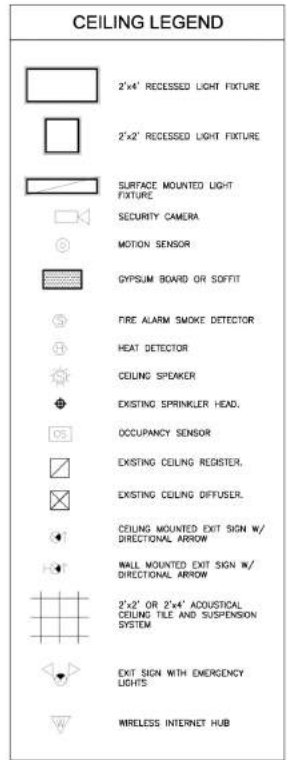
PLOT DATE: December 01, 2021 - 12:07pm

PROJECT: STAMFORD STILLMEADOW ELEMENTARY SCHOOL MILLWORK, FLOORING & CEILING REPLACEMENT 600 S HULLAVERT ROAD, STAMFORD, CT 06902  
DRAWING TITLE: LOWER LEVEL REFLECTED CEILING PLAN - REMOVALS - ALTERNATES #01 & #04  
F&D  
FULLER & D'ANGELO ARCHITECTS PLANNERS  
48 ENHANCED ROAD ELMSFORD NEW YORK 10523  
TEL: 914.899.1919  
WWW.FULLERDANGELO.COM

12-09-2021	B I D
05-03-2021	D.D. SUBMISSION
DATE:	ISSUE NO. 10
SHEET SIZE: 30"x42"	DRAWING NO.
SCALE: AS NOTED	<b>A200</b>
DRAWN BY: F & D	FILE NO: 21418.00



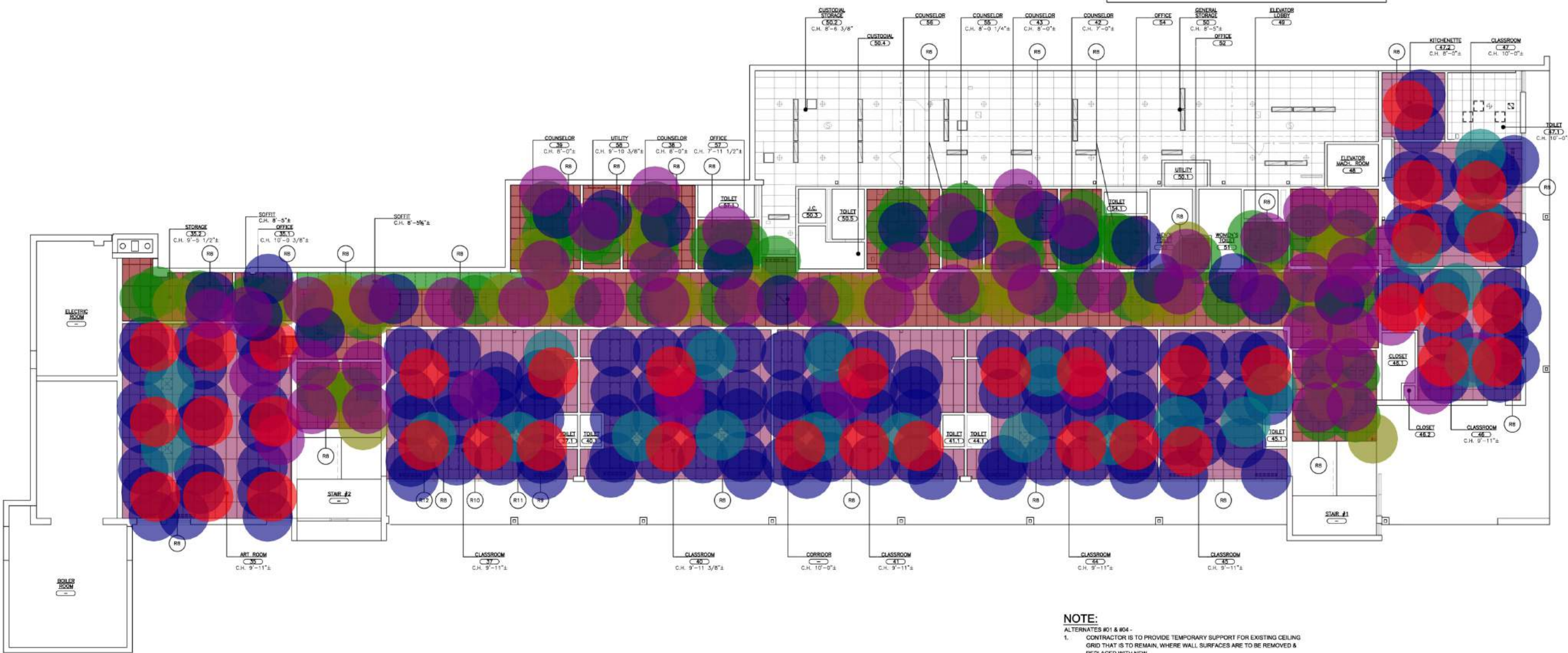
- R8- Remove Acoustical Ceiling Panel W/ Grid 6809.6 SQ FT
- R8- Remove Gypsum Board Soffit 160.6 SQ FT
- R8- Remove Gypsum Board Soffit W/ Framing @ 4'-0" H 50.6 FT
- R9- Remove Lighting Fixtures 126.0 EA
- R10- Remove and Relocate Ceiling Mounted Devices 11.0 EA
- R11- Remove and Relocate Mechanical Register/ Diffusers 22.0 EA
- R12- Remove and Relocate Sprinkler Heads 37.0 EA
- R8- Remove Acoustical Ceiling Panel W/ Grid 4484.4 SQ FT
- R9- Remove Lighting Fixtures 57.0 EA
- R10- Remove and Relocate Ceiling Mounted Devices 34.0 EA
- R11- Remove and Relocate Mechanical Register/ Diffusers 19.0 EA
- R12- Remove and Relocate Sprinkler Heads 44.0 EA



- ### REMOVAL NOTES:
- COORDINATE ALL REMOVALS WITH ASBESTOS AND LEAD ABATEMENT DRAWINGS AND SPECIFICATIONS.
- R1 REMOVE EXISTING VCT FLOOR TILE (MULTIPLE LAYERS MAY EXIST), WALL BASE, TRANSITION STRIPS, MOLDING AND SUBSTRATE DOWN TO EXISTING SLAB AT DOORS TO THE EXTERIOR. SALVAGE & CLEAN ALUMINUM SADDLES AND STORE FOR REINSTALLATION. MECHANICALLY PROFILE JOBS OF EXISTING FLOOR SLAB IN PREPARATION FOR NEW FLOOR FINISHES.
  - R2 REMOVE EXISTING CASEWORK, COUNTERTOPS, BASE AND ALL RELATED ITEMS. REMOVE EXISTING PLUMBING FIXTURES AND PROVIDE NEW SHUT OFF VALVES. PATCH ALL DISTURBED SURFACES TO MATCH EXISTING ADJACENT SURFACES.
  - R3 REMOVE EXISTING WARDROBE DOORS, SALVAGE HARDWARE AND ALL RELATED ITEMS FOR REINSTALLATION. REFER TO DOOR SCHEDULE. PATCH ALL DISTURBED SURFACES TO MATCH EXISTING ADJACENT SURFACES. MAINTAIN INTERIOR OF WARDROBE FOR RE-FINISHING.
  - R4 REMOVE EXISTING WALL MOUNTED TACK BOARD AND STORE. PATCH ALL DISTURBED SURFACES THAT ARE TO REMAIN. REINSTALL UPON COMPLETION OF WORK.
  - R5 REMOVE EXISTING TACKABLE WALL SURFACE, GYPSUM BOARD, SOUND ATTENUATION AND PORTION OF EXISTING CEILING WALL ANGLE DOWN TO EXISTING METAL STUDS. PROVIDE TEMPORARY SUPPORT FOR CEILING GRID WHERE CEILING WALL ANGLE IS REMOVED.
  - R6 REMOVE AND RELOCATE EXISTING WALL MOUNTED ELECTRICAL OUTLETS AND DATA JACKS, AS REQUIRED TO ACCOMPLISH WORK, WHETHER SHOWN OR NOT.
  - R7 ALTERNATE #01 - REMOVE EXISTING SUSPENDED ACOUSTICAL CEILING TILE PANELS (2'x4' OR 2'x2'). EXISTING SUSPENSION GRID IS TO REMAIN. TEMPORARY SUPPORT ALL LIGHT FIXTURES, CEILING MOUNTED DEVICES & DIFFUSERS.
  - R8 ALTERNATE #02 - REMOVE EXISTING SUSPENDED CEILING ASSEMBLY IN ITS ENTIRETY (2'x4' OR 2'x2'), INCLUDING BUT NOT LIMITED TO SUSPENSION SYSTEM, ACOUSTIC CEILING PANELS, WALL ANGLES, SEISMIC TIES AND ALL RELATED ITEMS. PATCH ALL DISTURBED SURFACES TO MATCH EXISTING ADJACENT SURFACES.
  - R9 ALTERNATE #02 - REMOVE EXISTING LIGHT FIXTURE. SEE ELECTRICAL DRAWINGS.
  - R10 ALTERNATE #02 - REMOVE AND RELOCATE EXISTING CEILING MOUNTED DEVICES TO LOCATIONS SHOWN ON NEW REFLECTED CEILING PLAN.
  - R11 ALTERNATE #02 - REMOVE AND RELOCATE EXISTING MECHANICAL REGISTER/DIFFUSER. EXTEND AND MODIFY DUCTWORK TO LOCATIONS SHOWN ON NEW REFLECTED CEILING PLAN. REFER TO DTL 8/A500.
  - R12 ALTERNATE #02 - RELOCATE EXISTING SPRINKLER HEADS TO LOCATIONS SHOWN ON NEW REFLECTED CEILING PLAN. REFER TO DTL 5/A500.
  - R13 SCHOOL DISTRICT IS TO REMOVE AND STORE EXISTING SMART BOARD TO ALLOW FOR REMOVAL OF TACKABLE WALL SURFACE. SCHOOL DISTRICT WILL REINSTALL SMART BOARD UPON COMPLETION OF NEW GYPSUM BOARD INSTALLATION.
  - R14 REMOVE WOOD TRIM & SIDE PANEL LEFT OVER FROM PRIOR CABINET REMOVAL. PATCH ALL DISTURBED SURFACES.
  - R15 REMOVE GYPSUM BOARD & WOOD STUD PARTITION IN ITS ENTIRETY, AS INDICATED. PATCH ALL DISTURBED SURFACES.



**GENERAL NOTE:**  
REFER TO DRAWING A10 AND SPECIFICATIONS FOR PHASING AND ALTERNATES



- NOTE:**  
ALTERNATES #01 & #04 -
1. CONTRACTOR IS TO PROVIDE TEMPORARY SUPPORT FOR EXISTING CEILING GRID THAT IS TO REMAIN, WHERE WALL SURFACES ARE TO BE REMOVED & REPLACED WITH NEW.
  2. SCRAPE, CLEAN, PRIME AND PAINT EXISTING CEILING GRID THAT IS TO REMAIN.

**1** LOWER LEVEL REFLECTED CEILING PLAN - PROPOSED - ALTERNATES #02 & #05  
SCALE: 1/8" = 1'-0"



AS PER USA CONGRESS ARCHITECTURAL WORKS COPYRIGHT PROTECTION ACT OF 1980 ALL IDEAS AND DESIGNS INCLUDING DERIVATIVES THEREOF, ALL DRAWINGS AND SPECIFICATIONS CONSTITUTE THE ORIGINAL COPYRIGHT WORK BY FULLER & D'ANGELO, P.C. (F&D). THE DRAWINGS AND SPECIFICATIONS AS INSTRUMENTS OF SERVICE BY F&D ARE CREATED BY F&D FOR THIS PROJECT ONLY AND REMAIN THE PROPERTY AND PROPERTY OF F&D. ANY REPRODUCTION WITHOUT THE PRIOR CONSENT OF F&D IS PROHIBITED.

**FULLER & D'ANGELO**  
P.C.  
ARCHITECTS & PLANNERS

48 ENHANCED ROAD, ELMSFORD NEW YORK 10523  
TEL: 914.839.4444 FAX: 914.899.1919  
WWW.FULLERANDANGELO.COM

PROJECT: STAMFORD ELEMENTARY SCHOOL STILLMEADOW MILLWORK & FLOORING REPLACEMENT  
800 HULLAVAN ROAD, STAMFORD, CT 06902

DRAWING TITLE: LOWER LEVEL REFLECTED CEILING PLAN - PROPOSED - ALTERNATES #02 & #05

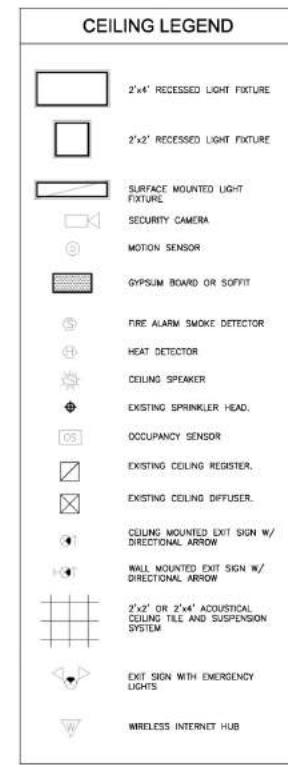
12-09-2021	B I D
05-03-2021	D.D. SUBMISSION
DATE:	ISSUED TO:
SHEET SIZE: 30"x42"	DRAWING NO:
SCALE: AS NOTED	<b>AR201</b>
DRAWN BY: F & D	FILE NO: 21418.00



AS PER USA CONCRETE ARCHITECTURAL WORKS COPYRIGHT PROTECTION ACT OF 1980 ALL IDEAS AND DESIGNS INCLUDING DERIVATIVES THEREOF, ALL DRAWINGS AND SPECIFICATIONS CONSTITUTE THE ORIGINAL COPYRIGHT WORK BY FULLER & D'ANGELO, P.C. (F&D). THE DRAWINGS AND SPECIFICATIONS AS INSTRUMENTS OF SERVICE BY F&D ARE CREATED BY F&D FOR THIS PROJECT ONLY AND REMAIN THE PROPERTY AND PROPERTY OF F&D. ANY REPRODUCTION WITHOUT THE PRIOR CONSENT OF F&D IS PROHIBITED.



**GENERAL NOTE:**  
REFER TO DRAWING A10 AND SPECIFICATIONS FOR PHASING AND ALTERNATES



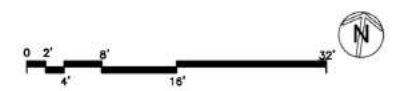
- WORKSCOPE NOTES:**
- WS1 PROVIDE FLOOR FINISH. SEE FINISH SCHEDULE AND FINISH PLANS.
  - WS2 PROVIDE CEMENT-BASED UNDERLAYMENT ON 100% FLOOR SURFACE TO ACHIEVE LEVEL & FLUSH CONDITION WITH ADJACENT FLOOR(S).
  - WS3 PROVIDE NEW LAMINATE CASEWORK WITH SOLID SURFACE COUNTERTOPS AND BACKSPLASH. SEE DETAILS A525.
  - WS4 PROVIDE NEW DOOR WITH PLASTIC LAMINATE FINISH. CLEAN, OIL, ADJUST AND RE-INSTALL SALVAGED HARDWARE. SEE DOOR SCHEDULE AND SPECIFICATIONS. LIGHTLY SAND AND PAINT INTERIOR OF WARDROBE. BEING CAREFUL NOT TO PAINT OVER INTERIOR HARDWARE (COAT RODS/HOOKS, SHELF STANDARDS, SLIDE BOLTS, ETC.). TYPICAL.
  - WS5 PROVIDE 5/8" TYPE 'X' GYPSUM BOARD OVER EXISTING METAL STUDS.
  - WS6 INSTALL RELOCATED EXISTING WALL MOUNTED ELECTRICAL OUTLETS AND DATA JACKS. CONCEAL CONDUIT WITH-IN WALL. RECESS BACKBOXES AND SET DEVICES FLUSH.
  - WS7 BASE MD - PROVIDE NEW EXTENDED LEG CEILING WALL ANGLE MOLDING AT ALL NEW GYPSUM BOARD.
  - WS8 ALTERNATE #01 & #04 - LEAVING EXISTING GRID, PROVIDE NEW ACOUSTICAL CEILING TILES AND RE-INSTALL CEILING MOUNTED DEVICES. EXISTING GRID IS TO REMAIN.
  - WS9 ALTERNATE #02 & #05 - PROVIDE NEW SUSPENDED ACOUSTICAL CEILING SYSTEM w/ ALL RELATED ITEMS AND GYPSUM BOARD SOFFITS WHERE INDICATED. ELECTRICAL CONTRACTOR TO PROVIDE NEW LIGHT FIXTURES & RELOCATE CEILING MOUNTED DEVICES. CENTERED IN TILE. COORDINATE INSTALLATION WITH MECHANICAL, ELECTRICAL AND PLUMBING. ALL DEVICES ARE TO BE ADJUSTED AND RE-INSTALLED CENTERED-IN-TILE. SEE SPECIFICATIONS FOR ADDITIONAL INFORMATION. SEE DETAILS A500.
  - WS10 ALTERNATE #02 & #05 - PROVIDE NEW LED LIGHT FIXTURES.
  - WS11 PROVIDE ENCLOSURE TO MATCH CASEWORK MOUNTED TO WALL TO CONCEAL EXPOSED DRAWING. ENCLOSURE IS TO EXTEND BENEATH COUNTER AND BE COPIED TO NEW CABINET. 2" PARTICLE BOARD w/ 3mm PVC EDGE AT EXPOSED CUT ENDS.
  - WS12 PROVIDE NEW PARTITION GYPSUM BOARD WITH 3/4" FINISHED OPENING. 3" METAL STUDS WITH 1/2" GYPSUM BOARD ON BOTH SIDES. REFER TO DTL 7/A500. FINISH PER FINISH SCHEDULE.  
RM 44 - TOP OF WALL TO UNDERSIDE OF CEILING  
RM 45 - WALL TO ALIGN WITH WINDOW MULLION TOP TO ALIGN WITH WINDOW SILL AND FAR SIDE TO BUTT INTO AND ALIGN WITH TOILET PARTITION.
  - WS13 ALTERNATE #01 & #04 - SCRAPE, CLEAN, PRIME AND PAINT EXISTING CEILING GRID.

- (2 X 2) Acoustical Ceiling Tile W/ Grid ACT-1 6802.6 SQ FT
- Gypsum Board Soffit 190.5 SQ FT
- (4'-0" H) Gypsum Board Soffit 9.2 FT
- (1'-6" H) Gypsum Board Soffit 4.9 FT
- (2 X 4) Recessed Ceiling Light 83.0 EA
- (2 X 2) Recessed Ceiling Light 8.0 EA
- (1 X 4) Surface Mounted Light 17.0 EA
- (1'-6" H) Gypsum Board Soffit 12.6 FT
- (2 X 2) Acoustical Ceiling Tile W/ Grid ACT-1 4436.9 SQ FT
- (4'-0" H) Gypsum Board Soffit 61.1 FT
- (2 X 2) Recessed Ceiling Light 12.0 EA
- (2 X 4) Recessed Ceiling Light 30.0 EA
- New Count 7.0 EA



**NOTE:**  
ALTERNATES #01 & #04 -  
1. CONTRACTOR IS TO PROVIDE TEMPORARY SUPPORT FOR EXISTING CEILING GRID THAT IS TO REMAIN. WHERE WALL SURFACES ARE TO BE REMOVED & REPLACED WITH NEW.  
2. SCRAPE, CLEAN, PRIME AND PAINT EXISTING CEILING GRID THAT IS TO REMAIN.

**1 LOWER LEVEL REFLECTED CEILING PLAN - PROPOSED - ALTERNATES #02 & #05**  
SCALE: 1/8" = 1'-0"



PLOT DATE: December 01, 2021 12:08pm

**FULLER & D'ANGELO P.C.**  
ARCHITECTS & PLANNERS  
48 ENHANCED ROAD ELMSFORD NEW YORK 10523  
TEL: 914.899.1919  
WWW.FULLERDANGELO.COM

PROJECT TITLE: STAMFORD STILLMEADOW ELEMENTARY SCHOOL MILLWORK, FLOORING & CEILING REPLACEMENT 480 S HULLAVAN ROAD, STAMFORD, CT 06902	
DRAWING TITLE: LOWER LEVEL REFLECTED CEILING PLAN - PROPOSED - ALTERNATES #02 & #05	
12-09-2021	B I D
05-03-2021	D.D. SUBMISSION
DATE:	ISSUE/REV. I/O
SHEET SIZE: 30"x42"	DRAWING NO:
SCALE: AS NOTED	<b>A201</b>
DRAWN BY: F & D	FILE NO: 21418.00







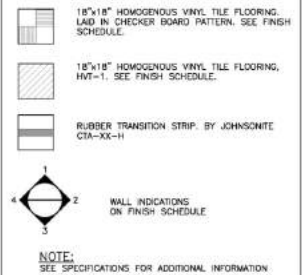
**REMOVAL NOTES:**

- COORDINATE ALL REMOVALS WITH ASBESTOS AND LEAD ABATEMENT DRAWINGS AND SPECIFICATIONS.
- R1 REMOVE EXISTING VCT FLOOR TILE (MULTIPLE LAYERS MAY EXIST), WALL BASE, TRANSITION STRIPS, MASTIC AND SUBSTRATE DOWN TO EXISTING SLAB AT DOORS TO THE EXTERIOR, SALVAGE & CLEAN ALUMINUM SHOLES AND STORE FOR REINSTALLATION. MECHANICALLY PROFILE 100% OF EXISTING FLOOR SLAB IN PREPARATION FOR NEW FLOOR FINISHES.
- R2 REMOVE EXISTING CASEWORK, COUNTERTOPS, BASE AND ALL RELATED ITEMS. REMOVE EXISTING PLUMBING FIXTURES AND PROVIDE NEW SHUT OFF VALVES. PATCH ALL DISTURBED SURFACES TO MATCH EXISTING ADJACENT SURFACES.
- R3 REMOVE EXISTING WARDROBE DOORS, SALVAGE HARDWARE AND ALL RELATED ITEMS FOR REINSTALLATION. REFER TO DOOR SCHEDULE. PATCH ALL DISTURBED SURFACES TO MATCH EXISTING ADJACENT SURFACES. MAINTAIN INTERIOR OF WARDROBE FOR RE-FINISHING.
- R4 REMOVE EXISTING WALL MOUNTED TACK BOARD AND STORE. PATCH ALL DISTURBED SURFACES THAT ARE TO REMAIN. REINSTALL UPON COMPLETION OF WORK.
- R5 REMOVE EXISTING TACKABLE WALL SURFACE, GYPSUM BOARD, SOUND ATTENUATION AND PORTION OF EXISTING CEILING WALL ANGLE DOWN TO EXISTING METAL STUDS. PROVIDE TEMPORARY SUPPORT FOR CEILING GRID WHERE CEILING WALL ANGLE IS REMOVED.
- R6 REMOVE AND RELOCATE EXISTING WALL MOUNTED ELECTRICAL OUTLETS AND DATA JACKS, AS REQUIRED TO ACCOMPLISH WORK, WHETHER SHOWN OR NOT.
- R7 ALTERNATE #01 & #04 - REMOVE EXISTING SUSPENDED ACOUSTICAL CEILING TILE PANELS (2x4 OR 2x2). EXISTING SUSPENSION GRID IS TO REMAIN. TEMPORARY SUPPORT ALL LIGHT FIXTURES, CEILING MOUNTED DEVICES & DIFFUSERS.
- R8 ALTERNATE #02 & #05 - REMOVE EXISTING SUSPENDED CEILING ASSEMBLY IN ITS ENTIRETY (2x4 OR 2x2), INCLUDING BUT NOT LIMITED TO SUSPENSION SYSTEM, ACOUSTIC CEILING PANELS, WALL ANGLES, SEISMIC TIES AND ALL RELATED ITEMS. PATCH ALL DISTURBED SURFACES TO MATCH EXISTING ADJACENT SURFACES.
- R9 ALTERNATE #02 & #05 - REMOVE EXISTING LIGHT FIXTURE. SEE ELECTRICAL DRAWINGS.
- R10 ALTERNATE #02 & #05 - REMOVE AND RELOCATE EXISTING CEILING MOUNTED DEVICES TO LOCATIONS SHOWN ON NEW REFLECTED CEILING PLAN.
- R11 ALTERNATE #02 & #05 - REMOVE AND RELOCATE EXISTING MECHANICAL REGISTER/DIFFUSER. EXTEND AND MODIFY DUCTWORK TO LOCATIONS SHOWN ON NEW REFLECTED CEILING PLAN. REFER TO DTL 8/A500.
- R12 ALTERNATE #02 & #05 - RELOCATE EXISTING SPRINKLER HEADS TO LOCATIONS SHOWN ON NEW REFLECTED CEILING PLAN. REFER TO DTL 5/A500.
- R13 SCHOOL DISTRICT IS TO REMOVE AND STORE EXISTING SMART BOARD TO ALLOW FOR REMOVAL OF TACKABLE WALL SURFACE. SCHOOL DISTRICT WILL REINSTALL SMART BOARD UPON COMPLETION OF NEW GYPSUM BOARD INSTALLATION.
- R14 REMOVE WOOD TRIM & SIDE PANEL LEFT OVER FROM PRIOR CABINET REMOVAL. PATCH ALL DISTURBED SURFACES.
- R15 REMOVE GYPSUM BOARD & WOOD STUD PARTITION IN ITS ENTIRETY, AS INDICATED. PATCH ALL DISTURBED SURFACES.

**WORKSCOPE NOTES:**

- WS1 PROVIDE FLOOR FINISH. SEE FINISH SCHEDULE AND FINISH PLANS.
- WS2 PROVIDE CEMENT-BASED UNDERLAYMENT ON 100% FLOOR SURFACE TO ACHIEVE LEVEL & FLUSH CONDITION WITH ADJACENT FLOOR(S).
- WS3 PROVIDE NEW LAMINATE CASEWORK WITH SOLID SURFACE COUNTERTOPS AND BACKSPLASH. SEE DETAILS A035.
- WS4 PROVIDE NEW DOOR WITH PLASTIC LAMINATE FINISH. CLEAN, OIL, ADJUST AND RE-INSTALL SALVAGED HARDWARE. SEE DOOR SCHEDULE AND SPECIFICATIONS. LIGHTLY SAND AND PAINT INTERIOR OF WARDROBE, BEING CAREFUL NOT TO PAINT OVER INTERIOR HARDWARE (COAT RODS/HOOKS, SHELF STANDARDS, SLIDE BOLTS, ETC.), TYPICAL.
- WS5 PROVIDE 5/8" TYPE 'X' GYPSUM BOARD OVER EXISTING METAL STUDS.
- WS6 INSTALL RELOCATED EXISTING WALL MOUNTED ELECTRICAL OUTLETS AND DATA JACKS. CONCEAL CONDUIT WITH-IN WALL. RECESS BRACKETS AND SET DEVICES FLUSH.
- WS7 BASE #02 - PROVIDE NEW EXTENDED LEG CEILING WALL ANGLE MOLDING AT ALL NEW GYPSUM BOARD.
- WS8 ALTERNATE #01 & #04 - LEAVING EXISTING GRID, PROVIDE NEW ACOUSTICAL CEILING TILES AND RE-INSTALL CEILING MOUNTED DEVICES. EXISTING GRID IS TO REMAIN.
- WS9 ALTERNATE #02 & #05 - PROVIDE NEW SUSPENDED ACOUSTICAL CEILING SYSTEM w/ ALL RELATED ITEMS AND GYPSUM BOARD SOFFITS WHERE INDICATED. ELECTRICAL CONTRACTOR TO PROVIDE NEW LIGHT FIXTURES & RELOCATE CEILING MOUNTED DEVICES. CENTERED IN TILE. COORDINATE INSTALLATION WITH MECHANICAL, ELECTRICAL AND PLUMBING. ALL DEVICES ARE TO BE ADJUSTED AND RE-INSTALLED CENTERED-IN-TILE. SEE SPECIFICATIONS FOR ADDITIONAL INFORMATION. SEE DETAILS A500.
- WS10 ALTERNATE #02 & #05 - PROVIDE NEW LED LIGHT FIXTURES.
- WS11 PROVIDE ENCLOSURE TO MATCH CASEWORK MOUNTED TO WALL TO CONCEAL EXPOSED DRAINAGE. ENCLOSURE IS TO EXTEND BENEATH COUNTER AND BE COPIED TO NEW CABINET. 1/2" PARTICLE BOARD w/ 3/8" PVC EDGE AT EXPOSED CUT ENDS.
- WS12 PROVIDE NEW PARTITION GYPSUM BOARD WITH 3/4" FINISHED OPENING. 3" METAL STUDS WITH 1/2" GYPSUM BOARD ON BOTH SIDES. REFER TO DTL 7/A500. FINISH PER FINISH SCHEDULE.  
RM 44 - TOP OF WALL TO UNDERSIDE OF CEILING  
RM 45 - WALL TO ALIGN WITH WINDOW MULLION. TOP TO ALIGN WITH WINDOW SILL AND FAR SIDE TO BUTT INTO AND ALIGN WITH TOILET PARTITION.
- WS13 ALTERNATE #01 & #04 - SCRAPE, CLEAN PRIME AND PAINT EXISTING CEILING GRID.

**FLOOR FINISH LEGEND**



WS1- (18" x 18") Homogenous Vinyl Tile (Checker Board Pattern) W/ Cement Based Underlayment	6396.9 SQ FT
WS1- (18" x 18") Homogenous Vinyl Tile HVT-1 W/ Cement Based Underlayment	301.8 SQ FT
Rubber Base RB-1	797.5 FT
(10'-0" H) Paint on Wall P-1	1036.5 FT
(8'-6" H) Paint on Wall P-1	3.5 FT
(7'-6" H) Paint on Wall P-1	45.1 FT
(9'-0" H) Paint on Wall P-1	311.1 FT
Rubber Transition Strip	14.9 FT
(1'-0" H) Paint on Wall P-1	33.0 FT
WS1- (18" x 18") Homogenous Vinyl Tile (Checker Board Pattern) W/ Cement Based Underlayment	1665.7 SQ FT
WS1- (18" x 18") Homogenous Vinyl Tile HVT-1 W/ Cement Based Underlayment	4772.7 SQ FT
Rubber Base RB-1	1205.0 FT
Rubber Transition Strip	42.1 FT
(10'-0" H) Paint on Wall P-1	605.6 FT
(8'-6" H) Paint on Wall P-1	415.2 FT



**GENERAL NOTE:**  
REFER TO DRAWING A10 AND SPECIFICATIONS FOR PHASING AND ALTERNATES



**1 LOWER LEVEL FINISH FLOOR PLAN**  
SCALE: 1/8" = 1'-0"  
0 2' 4' 8' 16'

AS PER USA CONGRESS ARCHITECTURAL WORKS COPYRIGHT PROTECTION ACT OF 1980 ALL IDEAS AND DESIGNS INCLUDING DERIVATIVES THEREOF, ALL DRAWINGS AND SPECIFICATIONS CONSTITUTE THE ORIGINAL COPYRIGHT WORK BY FULLER & D'ANGELO, P.C. (F&D). THE DRAWINGS AND SPECIFICATIONS AS INSTRUMENTS OF SERVICE BY F&D ARE CREATED BY F&D FOR THIS PROJECT ONLY AND REMAIN THE PROPERTY OF F&D. ANY REPRODUCTION WITHOUT THE PRIOR CONSENT OF F&D IS PROHIBITED.

**FULLER & D'ANGELO P.C.**  
ARCHITECTS & PLANNERS  
48 ENHANCED ROAD, ELMSFORD NEW YORK 10523  
TEL: 914.899.4444  
WWW.FULLERANDANGELO.COM

PROJECT: STAMFORD ELEMENTARY SCHOOL STILLMEADOW FLOORING & CEILING REPLACEMENT 800 S FULLERTON ROAD, STAMFORD, CT 06902	DRAWING TITLE: PARTIAL FINISH PLAN
12-09-2021	B I D
05-03-2021	D.D. SUBMISSION
DATE:	ISSUED TO:
SHEET SIZE: 30"x42"	DRAWING NO:
SCALE: AS NOTED	<b>A800</b>
DRAWN BY: F & D	FILE NO: 21418.00